

Relais 12V  
 Takamisawa/Fujitsu  
 JS12MN-KT or VS12MB (Untested)  
 Schrack RT134012 (untested)

Relais 5V  
 Takamisawa/Fujitsu  
 JS5MN-KT or VS5-MB (untested)

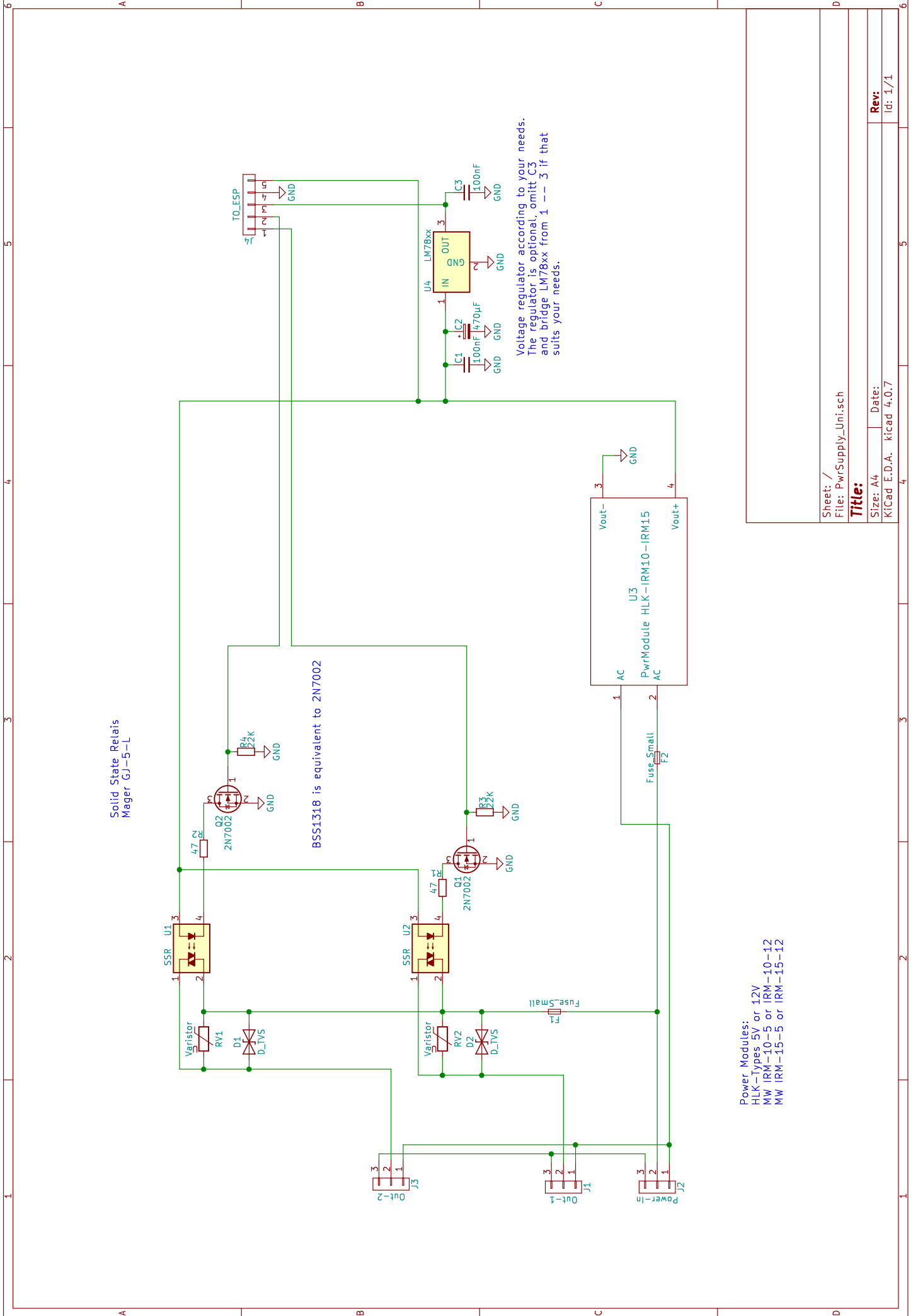
BSS138 is equivalent to 2N7002

Voltage regulator according to your needs.  
 The regulator is optional, omit C3  
 and bridge LM78xx from 1 - 3 if that  
 suits your needs.  
 LM7805..... 5V  
 LM7809..... 9V  
 LF-33..... 3.3V  
 Don't forget the heatsink!

Power Modules:  
 HLK 12V (very low power!)  
 MeanWell IRM-10-12 or IRM15-12  
 MW IRM-15-5 or IRM-15-12

Sheet: /	File: PwrSupply_Rly.sch
<b>Title:</b>	
Size: A4	Date:
KICad E.D.A. kicad 4.0.7	

Rev:  
 Id: 1/1



Power Modules:  
 HLK-Types 5V or 12V  
 MW IRM-10-5 or IRM-10-12  
 MW IRM-15-5 or IRM-15-12

Sheet: /	File: PwrSupply_Uni.sch
<b>Title:</b>	
Size: A4	Date:
KiCad E.D.A.	kiCad 4.0.7
Rev:	Id: 1/1